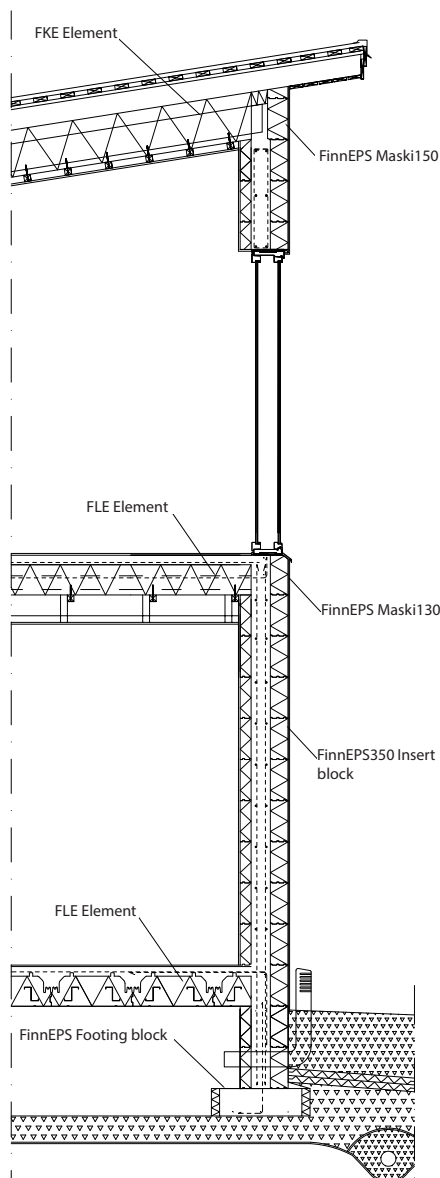


## FinnEPS Construction products

### - FinnEPS Insulated concrete form blocks

### - FinnEPS Elements

### FinnEPS Oy



FinnEPS Construction products



FinnEPS Footing block

### FinnEPS Insulated concrete form blocks

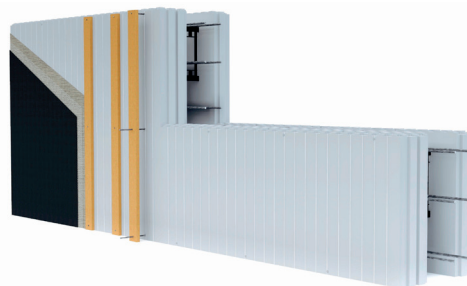
With fillable cores, insulated FinnEPS ICF blocks are suitable for both walls and foundations. The selection covers a wide range of ICF blocks from 200 mm wide blocks to 450 mm wide blocks and from low-energy applications to passive house applications (U values: 0.25–0.08 W/m<sup>2</sup>K). With FinnEPS ICF blocks, the way the foundation is laid is entirely up to the builder, as the blocks are suitable for both footings and pile foundations.

When the blocks are used to build walls, they can be finished with a number of different materials both on the inside and the outside. Interior walls can be covered with plasterboard or tiles, while exterior walls are most often plastered or covered with wood panels in Finland.

- Lightweight structure allows for rapid construction
- Energy efficient
- Through holes can be easily created before concrete is poured
- No need for separate moisture or wind barriers
- Chases are cut using hot wire
- No need to rent expensive hoisting equipment or scaffolding
- No need for expensive weather protection
- Wide range of finishing options
- Made for Northern conditions
- Suitable for unique applications

### FinnEPS Insert concrete block range

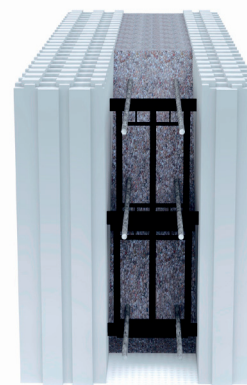
- FinnEPS200 Insert double open-end block AA
- FinnEPS200 Insert corner block AK
- FinnEPS350 Insert double open-end block AA
- FinnEPS350 Insert corner block KK
- FinnEPS450/31 Insert double open-end block AA
- FinnEPS450/31 Insert corner block KK
- FinnEPS450 Insert double open-end block AA
- FinnEPS450 Insert corner block AK
- FinnEPS MASSA block AA
- FinnEPS MASSA block corner R/L



FinnEPS block wall



# FINNEPS



FinnEPS MASSA block

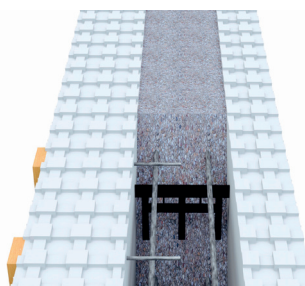


### FinnEPS EPS concrete block range

- FinnEPS350 double open-end block AA
- FinnEPS350 corner block KK
- FinnEPS450 double open-end block AA
- FinnEPS450 corner block AK

### Other FinnEPS block products

- FinnEPS Footing block
- FinnEPS Corner footing block R/L
- FinnEPS Maski130
- FinnEPS Maski150
- FinnEPS Maski220
- FinnEPS Concrete pour cover
- FinnEPS Arch



Fixtures on FinnEPS block wall

## FinnEPS Elements

### FLE Elements

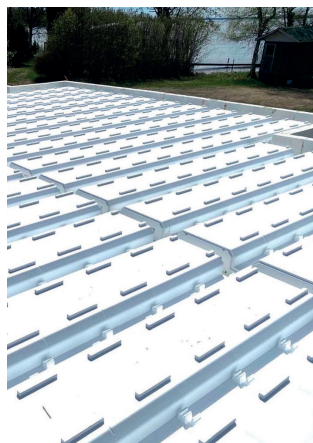
FLE Elements are suitable for both base and intermediate floors. With FLE Floor elements, building the base floor is fast and cost-effective as the load-bearing elements and concrete finish can be poured at the same time. Weighing just approximately 8 kg/m, FLE Elements are easy to handle – expensive hoisting equipment may not be needed when the elements are installed. The elements are easy to shape and modify. Any gaps, through holes and dips are easy to make in FLE Elements.

### FKE Elements

FKE Elements are EPS elements reinforced with a Z steel array. They are used as load-bearing roof structures. FKE Elements are suitable for different roof slopes and replace several components of traditional roof structures. FKE Elements are compatible with all structure types and roofing materials.

### FSE Elements

Quick to install, FSE Elements are large wall elements poured on site, which facilitates construction in winter. FSE Elements are suitable for all residential floors starting from the plinth. After installation, the entire floor is ready for concrete pouring. The elements allow the construction of concrete structures on sites with very limited space or which are difficult to access.



Laying FLE Elements



A housing development in Kirkkonummi built using FinnEPS element products.



Installation of FSE Elements



Installation of FKE Elements



## FinnEPS Oy

Founded in 1989, FinnEPS Oy is a reliable and stable family-owned company based on Finnish expertise. The company designs and manufactures insulated concrete construction products.

FinnEPS has manufactured concrete construction products in its own factory in Kokemäki since 1999. All block products manufactured by FinnEPS have GTIN codes and can be found in the global GS1 register and the RT product database. The emissions classification of FinnEPS construction products is M1 and they are manufactured in accordance with ISO 9001 quality management standards.

All FinnEPS block and element products are listed in the Nordic Ecolabel's Building Materials Database, meaning that they can be used in buildings ecolabelled with the Nordic swan. The first detached house in Finland ecolabelled with the Nordic swan was built using FinnEPS blocks.

FinnEPS is constantly developing its construction products and the company pays close attention to the changing industry regulations to ensure its products comply with them. All FinnEPS products are designed and manufactured in Finland.

## PRODUCTION, SALES AND ENQUIRIES

FinnEPS Oy  
Yhdystie 1 B  
32810 Kokemäki, Finland  
Tel. +358 (0)2 5460 778  
myynti@finneps.fi  
www.finneps.fi



**FINNEPS**